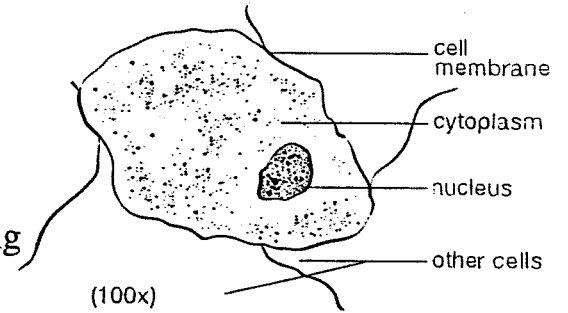


Scientific Drawing

Overview

- Use pencil and unlined paper
- Large drawing focussing on one area or cell
- Draw only what you see
- Do not color or shade only stippling
- Label in small case letters to the right of the drawing
- Write magnification, title and name on drawing
- One drawing per sheet of paper

HUMAN SKIN CELL



The stippling on this drawing of a human skin cell shows that some areas are darker than others.

Calculating field of View

1. Measure field of view on low power with clear plastic ruler-measure in millimetres
2. Calculate field of view for medium and high power with this formula

Medium power field of view = low power field of view x low power magnification divided by medium power magnification

Eg.) low power field of view is 2.5 mm

- Low power mag. = 4x

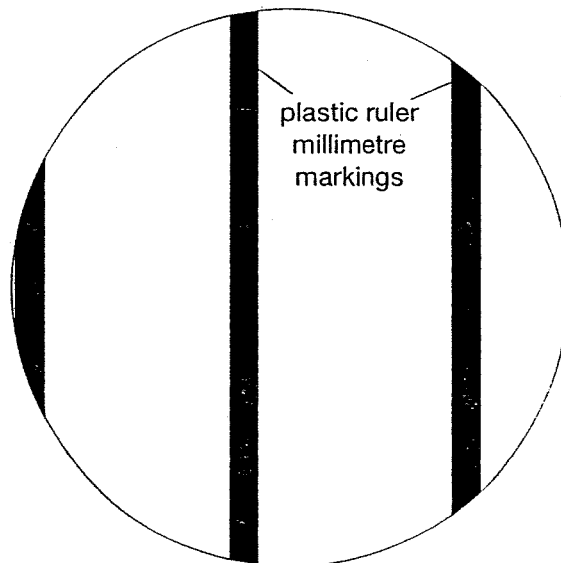
- High power mag. = 40x

High power field of view = $2.5\text{mm} \times \frac{4x}{40x}$

High power field of view = $2.5\text{mm} \times 0.1$

= 0.25 mm

This means that the diameter across the field of view is only 0.25 mm.



The diameter of the field of view illustrated here is 2.5 mm.