

Science 8 unit 3 Topic 4

Lenses and Vision

Page 208 – 220

Name;

Date:

Define the following terms:

1.) lens:

2.) concave lens:

3.) convex lens:

4.) focuses:

5.) retina:

6.) near-sighted:

7.) far-sighted:

8.) accommodation:

9.) near point :

10.) far point:

11.) diaphragm:

12.) Aperture:

13.) shutter:

14.) iris:

15.) Pupil:

16.) iris reflex:

17.) optic nerve:

18.) blind spot:

2.) As an object comes closer to a convex lens, what happens to

a.) the size of the image?

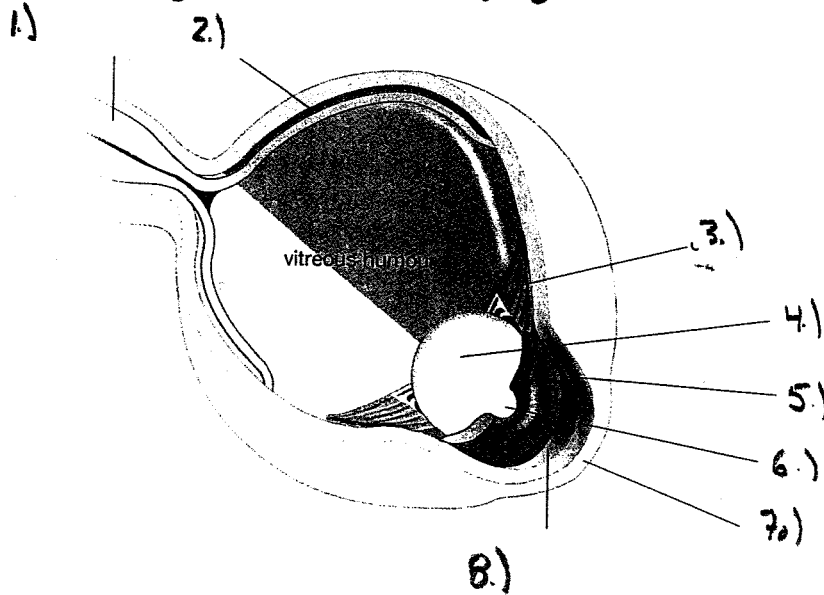
b.) the attitude of the image?

c.) the location of the image?

3.) draw a diagram to show what happens when light passes through
a.) a concave lens:

b.) a concave lens:
Conver

4.) label the diagram of the human eye. 9 marks



5.) State which part of the human eye corresponds to each of the following parts of a camera, and explain why:

a.) the film:

b.) the diaphragm:

c.) the aperture:

d.) the lens: